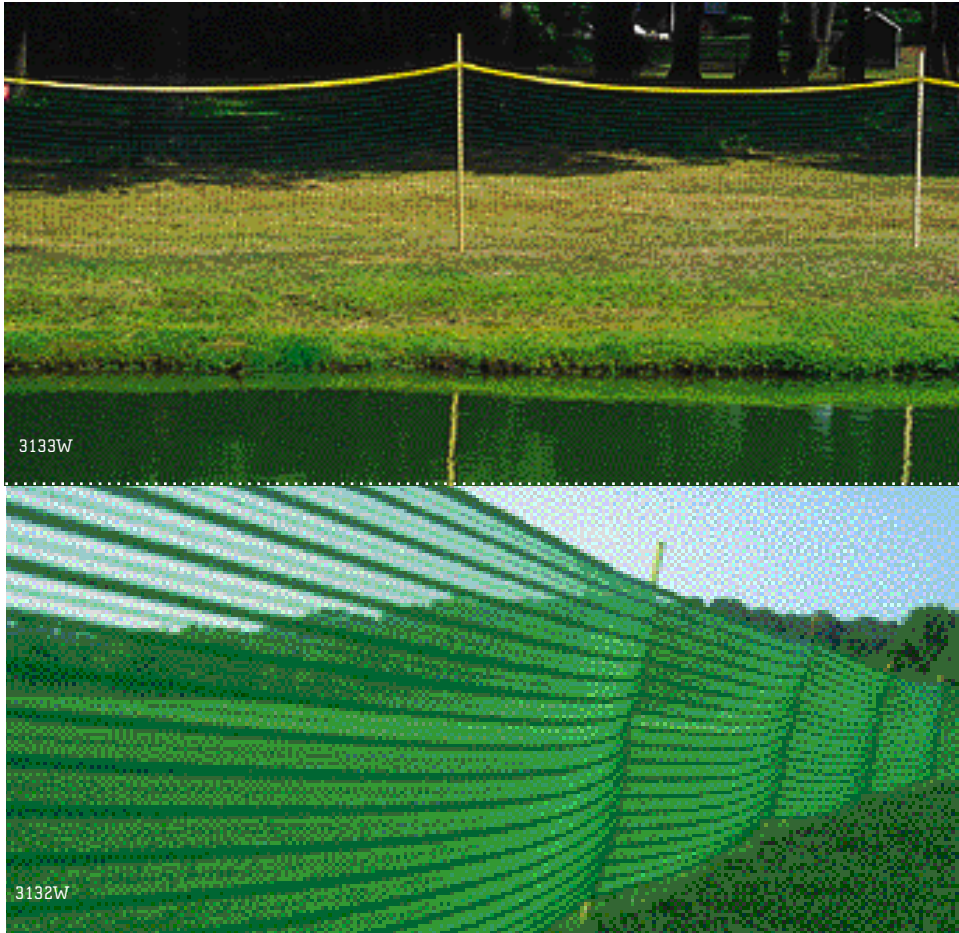


# Wilson Outdoor Fencing



### 3133W / Wilson Crowd Control

Effective and inexpensive crowd control, especially during sporting events.

- + Heavy-duty green polyethylene twisted cord combines unobtrusive appearance with maximum strength.
- + Crowd control netting is bound on top with yellow vinyl coated tape.
- + 4', 5' or 6' heights and length up to 300'.
- + 38 sq. ft./lb.

### 3132W / Wilson Quik Fence™

Strong, heat-finished vinyl-coated polyester fencing is ideal for crowd control, course delineation and boundary marking.

- + Comes in rolls of 150' x 46"
- + Black, Blue, Green Purple, Red, or Yellow.
- + 27 lbs.



### 266W / Wilson Fence-All Knitted Fencing

Will not rust, rot or mildew. Lightweight for easy handling and storage, constructed of flexible, knitted, UV stabilized polyethylene. Economical and reusable.

- + Comes in rolls of 150' x 46"
- + Green, Orange or Red. 12 lbs.



### 289W / Wilson Fabric Fencing

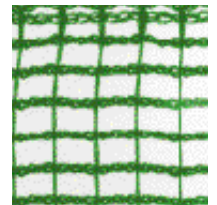
The ideal alternative to expensive chain-link fencing. Made of durable 1 3/4" mesh polyethylene netting (unbound), it's perfect for private tennis courts because it's aesthetically pleasing.

- + Easy to attach to metal or wood poles.
- + 10' or 12' H. Comes in lengths of 60' or 120'.
- + Also available in other lengths on special order.
- + Available in Green only. 38 sq. ft./lb.

### 7020W / Wilson Sports Fence

Great for crowd control at events and facilities. Heavy duty. Highly visible. UV stabilized for long-term installation. Mesh of 3/8" allows wind flow.

- + 4' x 150'. Blue, Green, Orange or Red. 24 lbs.



### 3137W / Wilson Construction Site Fencing

Lightweight, inexpensive fencing perfect for temporary use at construction sites. Made of woven polyethylene, hemmed and grommeted.

- + 68" x 150'. Black. 32 lbs.



See Page 20 for Installation Instructions.

