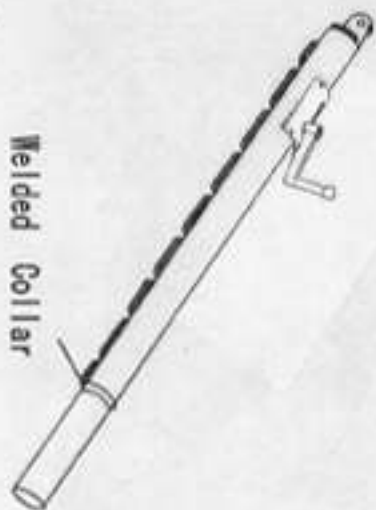


3464 Round Live End Tennis Post Assembly



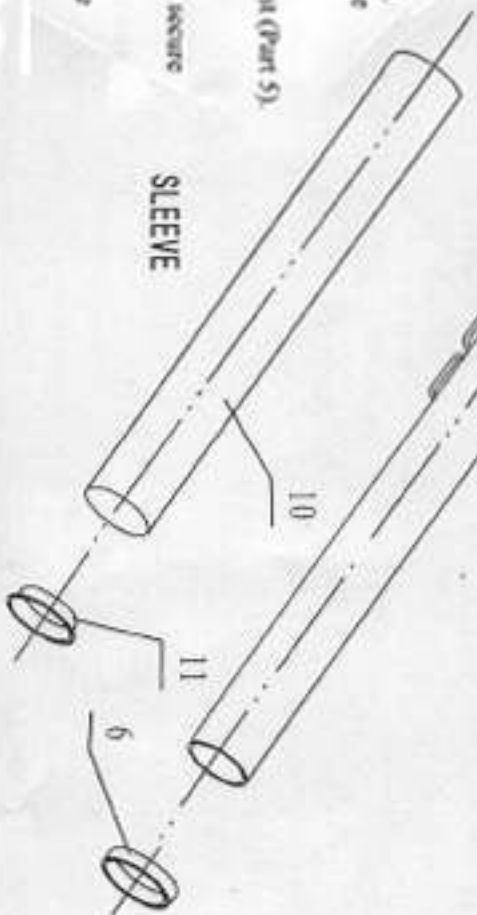
ITEM	No.	NAME	QUANTITY
1	299A	Live End Cap	1
2	0023-1-2	Pin	1
3	0023-1-3	Pulley	1
4	3202	Round Winder	1
5	3464	2-7/8" Round Post	1
6	3296	2-7/8" Round Collar, welded to Post	1
7	0034-10	Screws	4
8	BG12618-90	Rivet	8
9	STP2-02-02	Lacing Rod	1
10	246W	HDPE Sleeve, optional	1 (optional)
11	3111W 2-7/8	Sleeve cap, optional	2 (optional)

Tools needed: wrench.



Assembly Instructions

1. Slide Pulley (Part 3) into the open side of Live End Cap (Part 1). Then Screw Pin (Part 2) into the pin holes to secure Pulley to the Live End Cap.
2. Slide Live End Cap (Part 1) into the top of the 2-7/8" Round Post (Part 5).
3. Place winder (Part 4) onto 2-7/8" Round Post (Part 5). Align the four screw holes and screw in the 4 Screws (Part 7) to secure Winder to Post.
4. 246W sleeve (Part 10) & 3111W 2-7/8" Sleeve Cap (part 11) are only supplied when ordering sleeves



#3464 POST NET INSTALLATION GUIDE

Tools required: Wrench

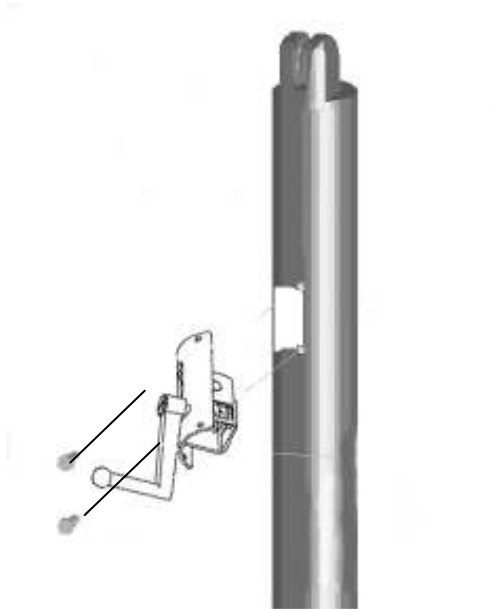


FIG 1.

1. Assemble posts by inserting round internal winder into slot on side of the 2-7/8" winder post. Align the four screw holes and attach screws (Part 0034-10). Secure with wrench to secure winder to post. (FIG. 1)

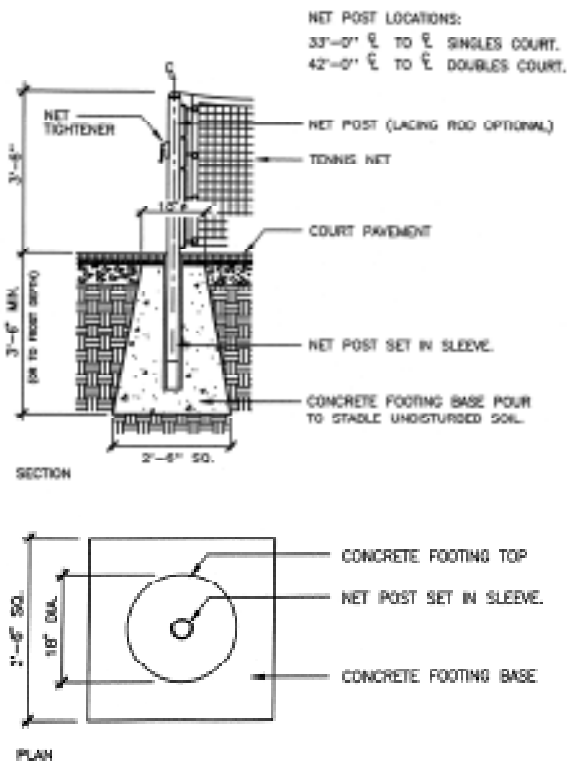


FIG 2.

2. Position the sleeves* in the ground at the correct locations for your court and insert the posts. When installing posts, make sure they will rest no higher than 1" above the net cord, at a height of about 3'-6" above the court surface. The footings should be a minimum of 3'-6" below surface or to the frost depth of your area. (FIG. 2)

Model 3464 sleeves not included.

Continued

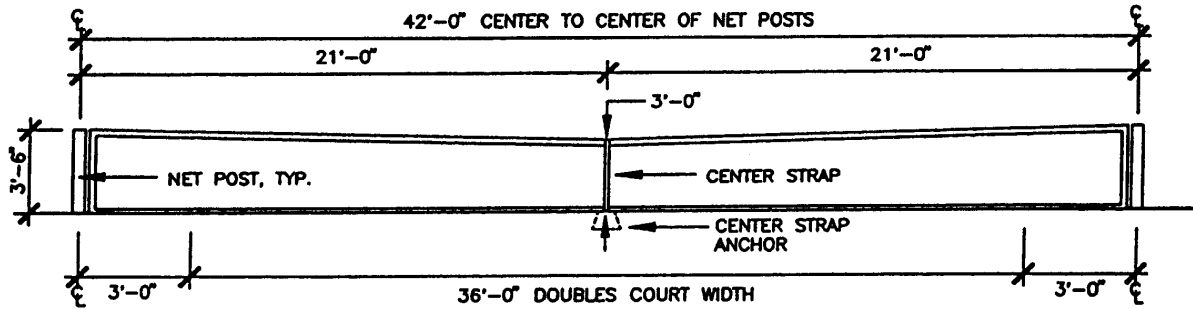


FIG. 3

- Place footings so that the center line of the posts will be 3' outside the court on each side. The center lines of posts should be positioned 42' apart for Doubles court (FIG. 3) and 33' apart for Singles court.



FIG. 4

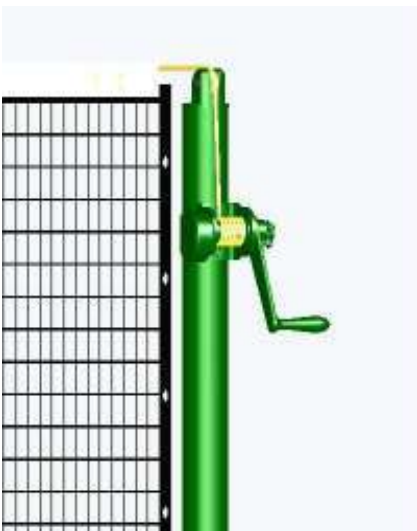


FIG.5

- Install pipe anchor: making sure the anchor is installed flush with the surface and that the pin is parallel to the net line to avoid twisting the center strap.
- Begin installing your net by hooking the loop end of the tennis net cable to the cable cleat on the deadhead post (FIG.4).
- On the winder head post (FIG.5), pull on the cable until it is taut and the net height is about 42 inches at the post. Bring cable over pulley and down to where the winder is set into the post.
- With the net still taut, cut the cable so that the excess cable length is about 12 inches, before feeding it into the winder. Do not peel back coating when cutting because the cable end that goes into the winder hole must have coating still on it.

Continued

8. Pull the cut end of cable over the top of winder as you push winder pulley to left so that it is aligned with the sprocket hole. Put cable end into sprocket hole. Crank handle clockwise to tighten net cable. *Be careful not to over-tighten!*

9. Fit dowels/side stakes if available into side pockets of the net.

10. Install lacing cord at each end by making a 2" knotted loop on one end of the lacing cord. Run the other end through both grommets in the tennis net headband and around the post, through the 2' loop and back around the post in the opposite direction. (FIG. 6)

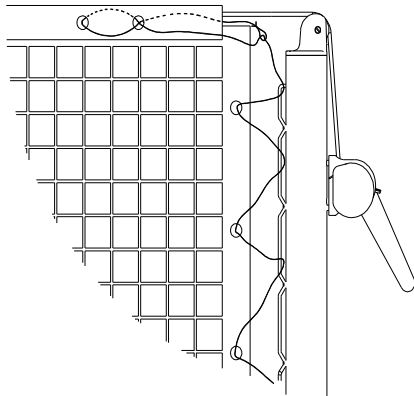


FIG. 6

11. Continue wrapping the cord around the post, through the lacing bars and through the grommets on the tennis net side band, applying equal pressure as you wrap. Tie off the cord at the bottom of the post. Repeat for other post. FIG. 7 shows a properly laced net. Install center strap and adjust it to maintain a net height of 36" at center.

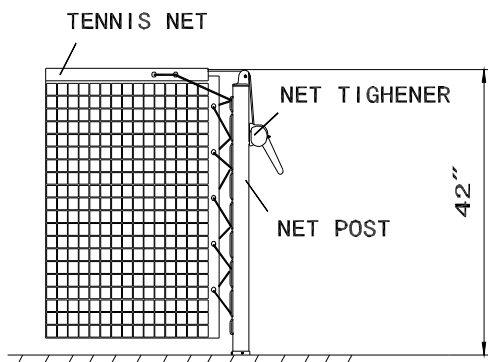


FIG. 7

12. If optional sleeves are purchased, use them for easy removal of posts for resurfacing, maintenance, posts repair or replacement, and alternate uses of the court. During the off season or when winterizing, it is best to remove net posts and plug the sleeves with sleeve covers to prevent moisture and dirt from falling in. (FIG. 8)

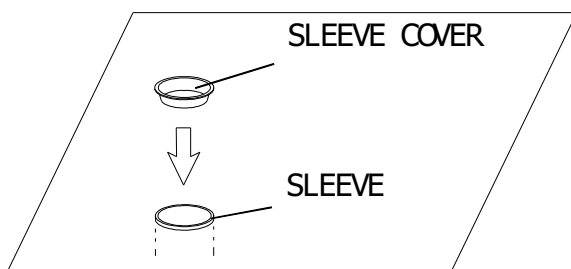


FIG. 8